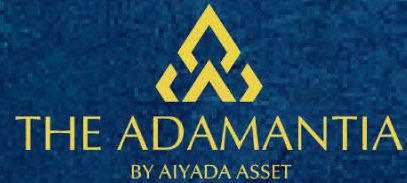




THE ADAMANTIA

BY AIYADA ASSET



Featuring an outdoor swimming pool, a garden, and a terrace, The Adamantia - Luxury pool villa surrounded by nature provides accommodations in Thalang ,Phuket. This property offers a private pool and private parking.

There are 2 villa types with distinctive spaces and styles 4-5 bedrooms.

This is a four-bedroom villa surrounded by a verdant garden. The living area, dining room, and all bedrooms are connected with a view of the swimming pool. The rooftop garden is parallel to the building that provides cozy shade and lighting inside the house for different moods during night and day.

SERVICES & FACILITIES

- 24 hrs-CCTV (security cameras)
- Pet-friendly outdoor area
- Multifunction room
- Rooftop farm & garden



THE ADAMANTIA
BY AIYADA ASSET



THE ADAMANTIA LUXURY POOL VILLA

Email: info@aiyadaasset.com

+66(0) 63 164 9979

www.aiyadaasset.com


THE ADAMANTIA
BY AIYADA ASSET

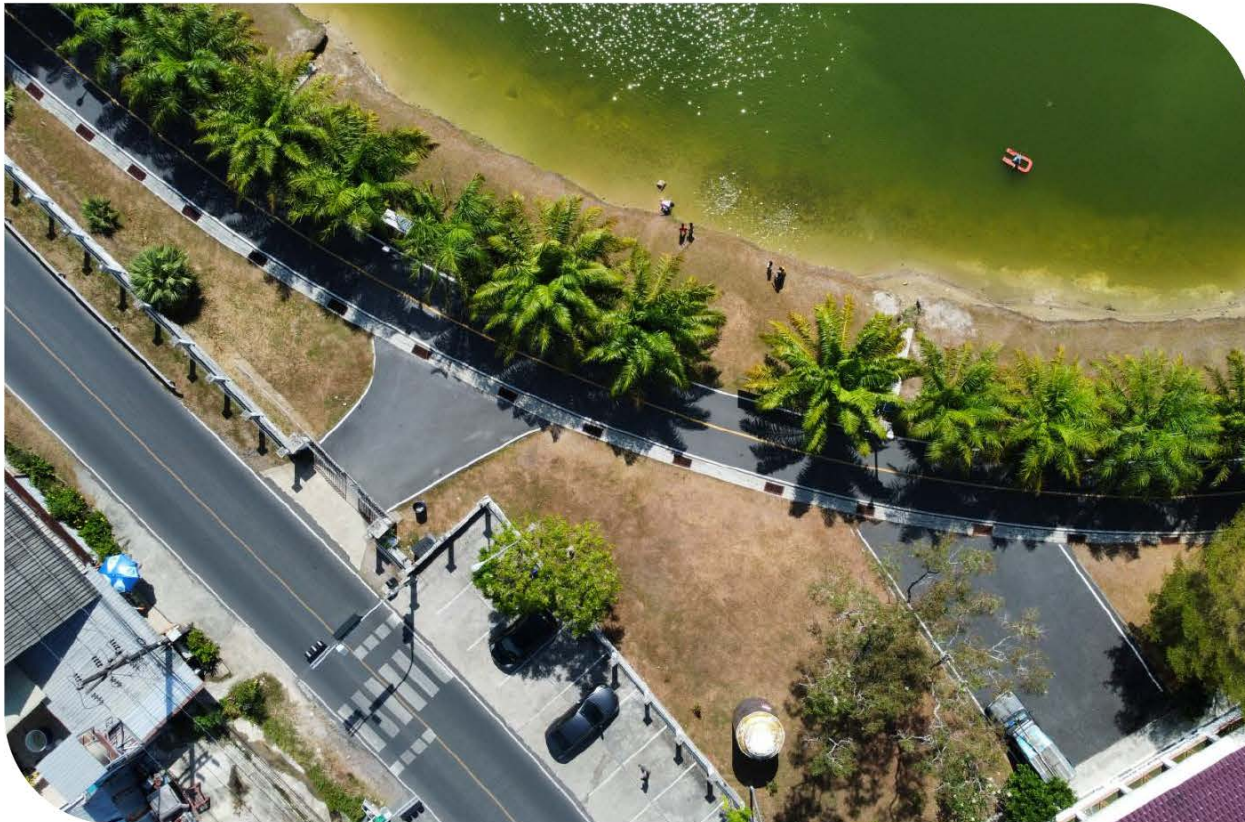
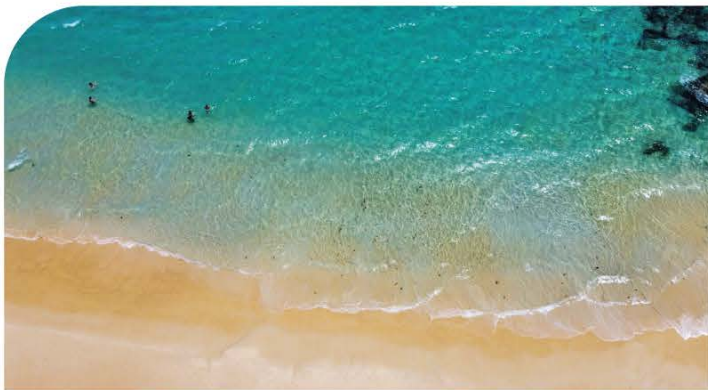


THE ADAMANTIA LUXURY POOL VILLA



THE ADAMANTIA LUXURY POOL VILLA

Avoiding the chaos, toxic and bad energy. A clean and uncontaminated environment for you to breathe in wholeheartedly whilst consistently with a great environment with fresh air all year round .



THE ADAMANTIA LUXURY POOL VILLA

A luxurious pool villa set in a peaceful location blended perfectly in nature. Close to Layan Beach in 15 minutes.



THE ADAMANTIA LUXURY POOL VILLA

Location



NEARBY ATTRACTIONS



PORTO DE PHUKET



ROBINSON DEPARTMENT STORE-THALANG



KAJONKIET INTERNATIONAL SCHOOL



LAYAN BEACH



PHUKET INTERNATIONAL AIRPORT



BOAT AVENUE MODERN STREET MALL



THE ADAMANTIA
BY AIYADA ASSET

MASTER PLAN

Adamantia Luxury Villas


TYPE A

TYPE B



TYPE: A

Modern Luxury Style


THE ADAMANTIA
BY AIYADA ASSET



TYPE: A



THE ADAMANTIA
BY AIYADA ASSET


Plot Size: 515.21 SQ.M.
Internal Area: 237.03 SQ.M.

External Area: 179.48 SQ.M.
Garden Area : 98.70 SQ.M.



TYPE: B

Modern Luxury Style


THE ADAMANTIA
BY AIYADA ASSET



TYPE: B



THE ADAMANTIA
BY AIYADA ASSET

Plot Size: 502.27 SQ.M.
Internal Area: 229.10 SQ.M.

External Area: 173.72 SQ.M.
Garden Area : 99.45 SQ.M.

